

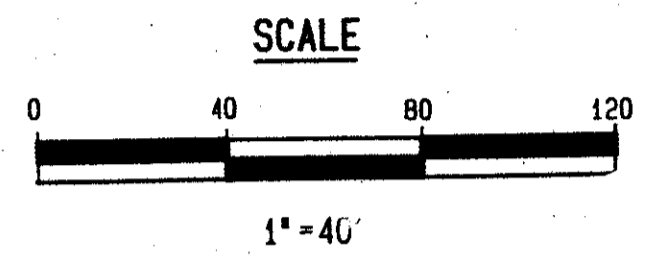
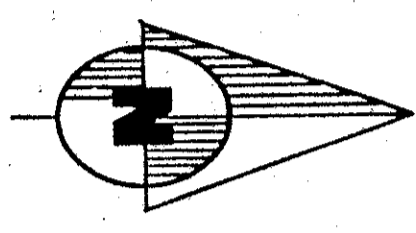
INDEX MAP

DUNES PLAT NO. 1 HOLES 14 AND 16

OF PALM BEACH POLO AND COUNTRY CLUB
WELLINGTON - P. U. D.

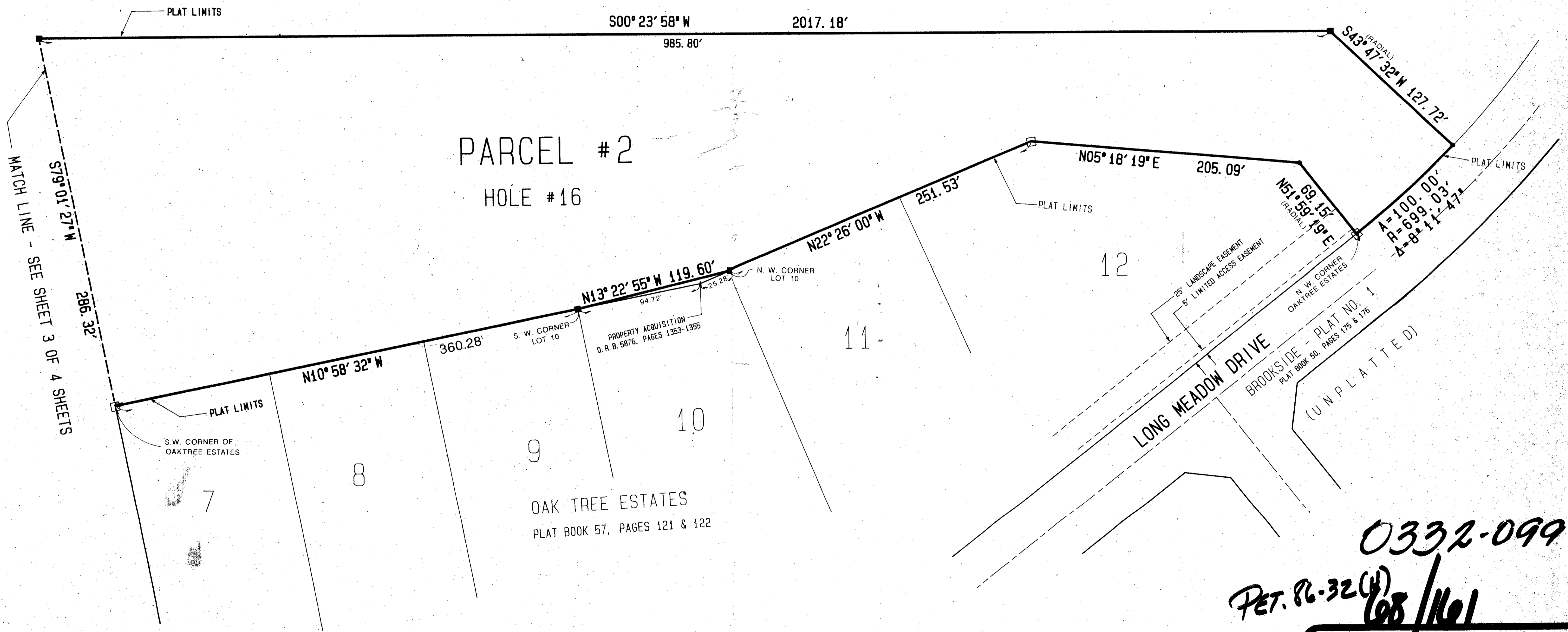
LYING IN PART OF SECTION 14
TOWNSHIP 44 SOUTH, RANGE 41 EAST
PALM BEACH COUNTY, FLORIDA

SHEET 4 OF 4 SHEETS
JUNE 1991



- LEGEND**
- P.B.C. = PALM BEACH COUNTY
 - NO. = NUMBER
 - P.U.D. = PLANNED UNIT DEVELOPMENT
 - + = MORE OR LESS
 - A = ARC LENGTH
 - Δ = CENTRAL ANGLE
 - R = RADIUS
 - C = CENTERLINE
 - D.U. = DWELLING UNIT
 - P.L.S. = PROFESSIONAL LAND SURVEYOR
 - P.R.M. = PERMANENT REFERENCE MONUMENT
 - P.O.B. = POINT OF BEGINNING
 - SEC = SECTION
 - O.R.B. = OFFICIAL RECORD BOOK
 - A.I.D. = ACME IMPROVEMENT DISTRICT

(UNPLATTED)



TAZ # 790

BOOK 68
PAGE 16
FLOOD ZONE AO-1
FLOOD MAP # 100B
QUAD # 62
ZONING
SE
ZIP CODE 33414
PUD NAME Wellington, P.U.D.
12/19/91

0332-099
PET. 86-32(4)
68/161

DUNES PLAT No. 1, HOLES 14 & 16

Dailey-Fotony, inc.
land surveyors, planners, engineers
5050 10th Avenue North, Suite 9 - Lake Worth, Florida 33463-2602
Phone 407-965-8787